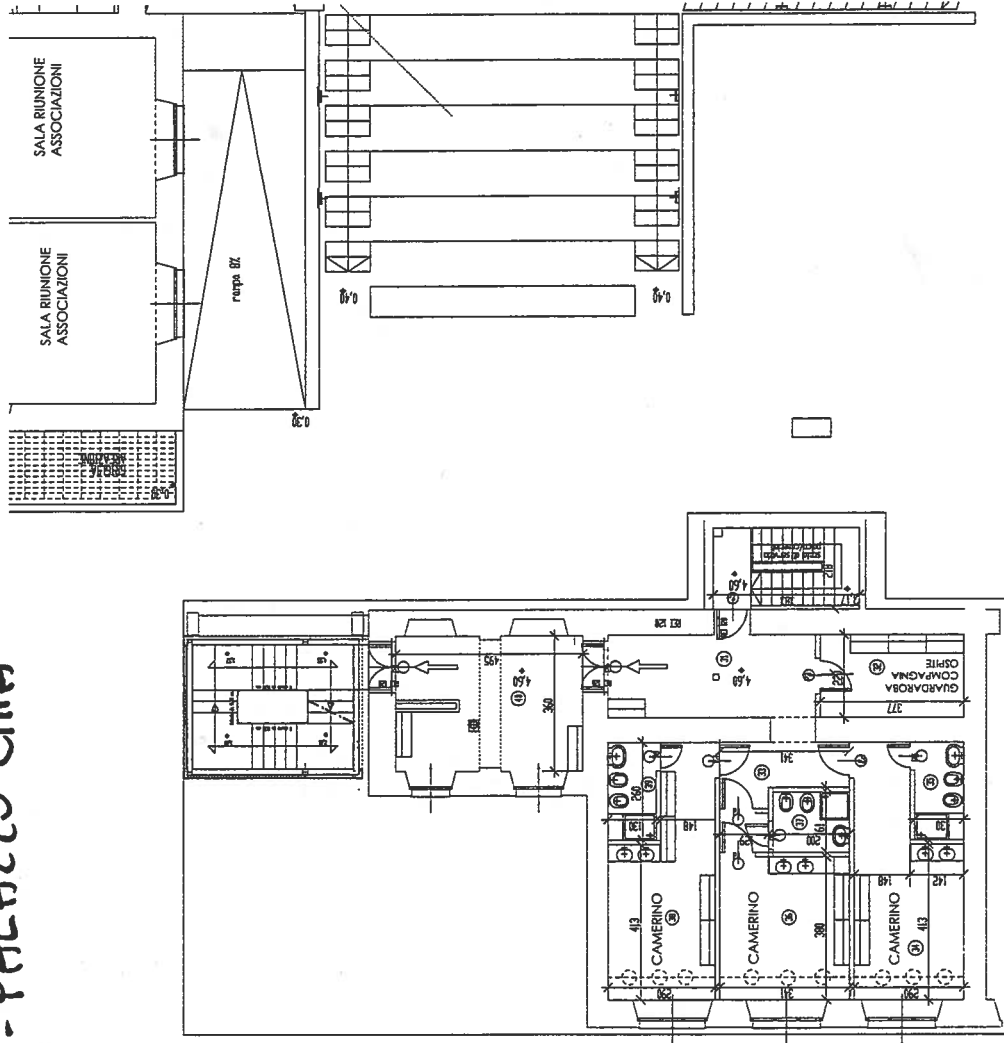


PLANIMETRIA 4 - PALAZZO CITÀ

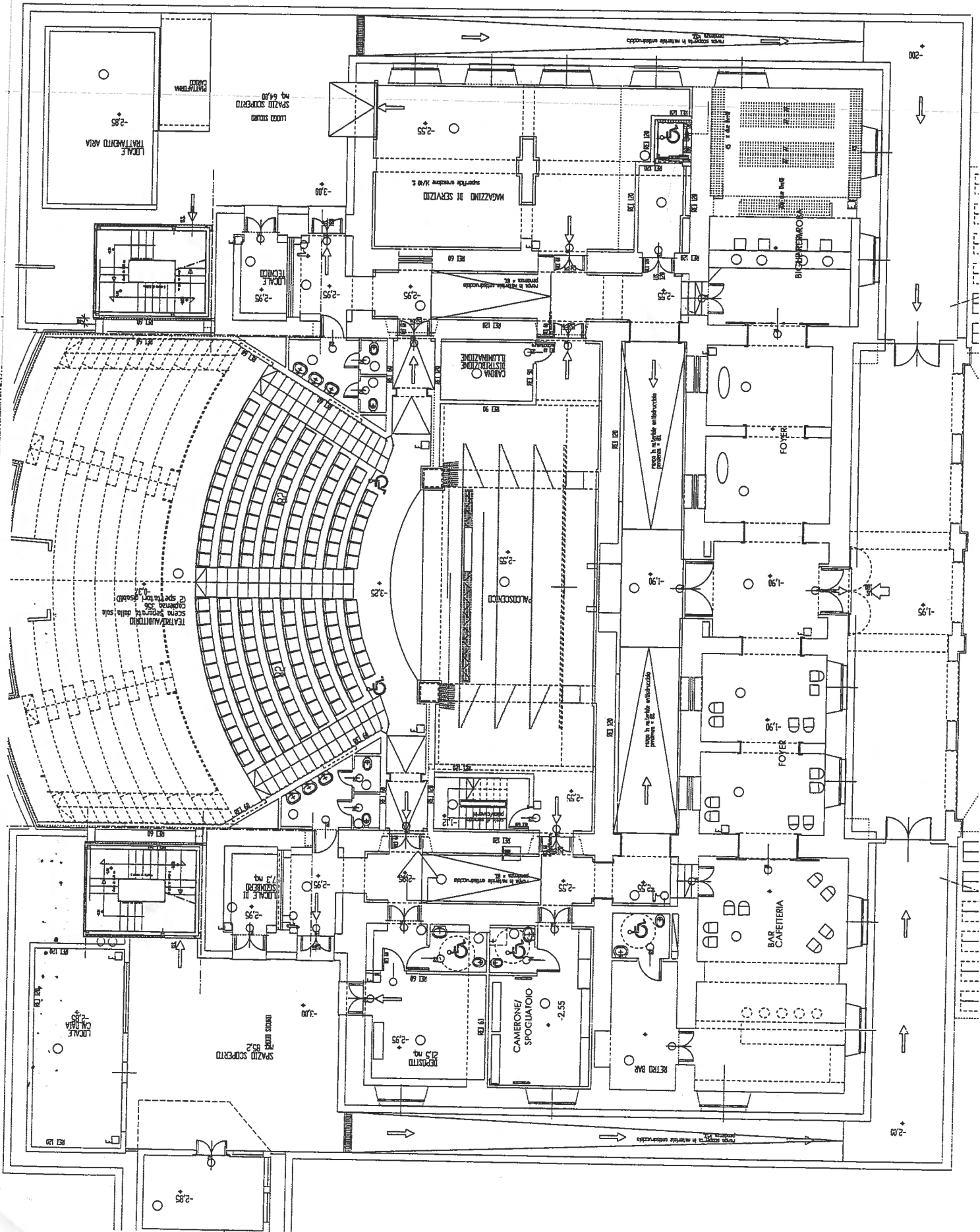
MO 149



STRALCIO PIANO 1° INTERMEDIO

CAMERINI (prima parte del teatro)

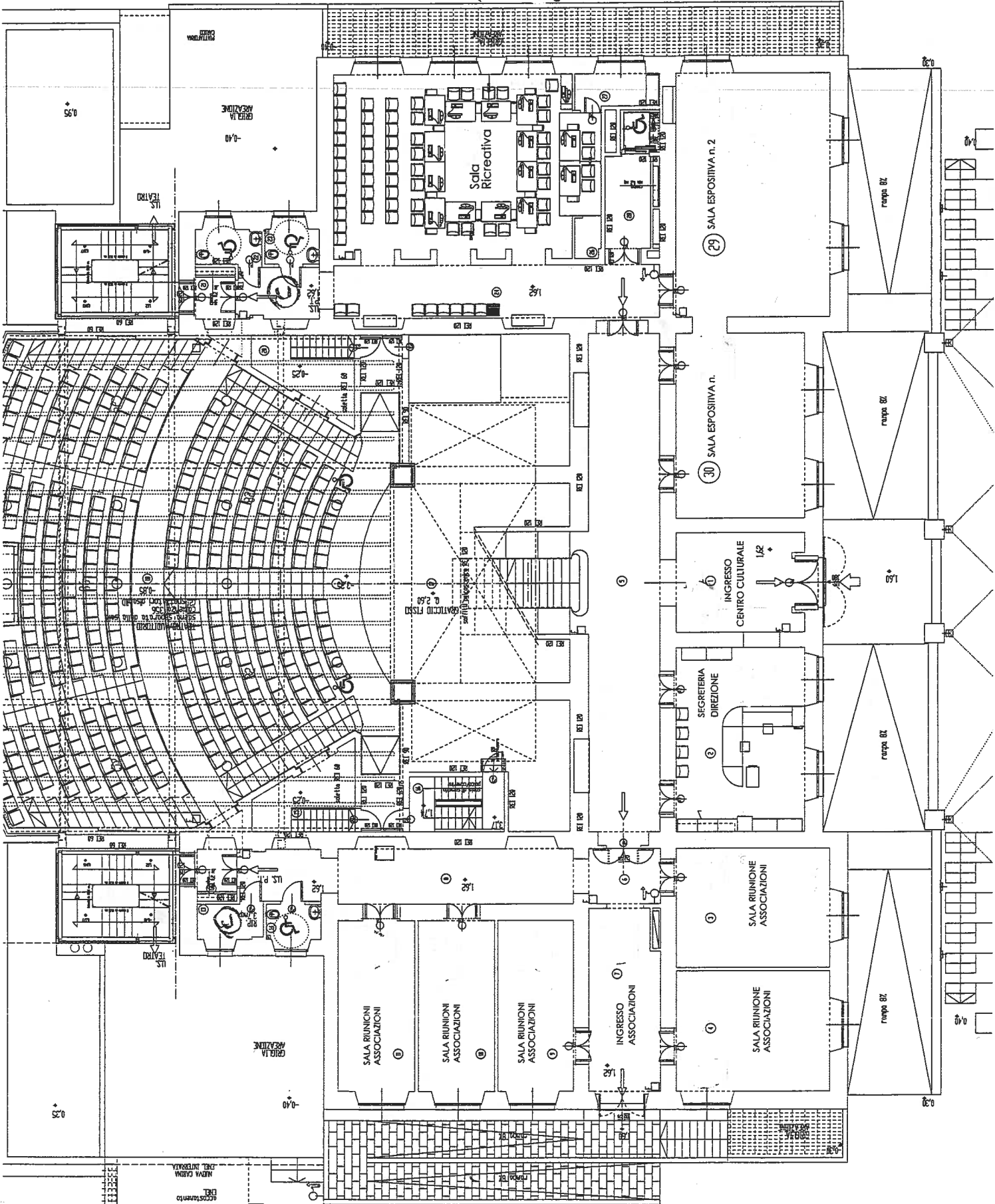
TEATRO



PIANO I

URP
SALA RIUNIONE

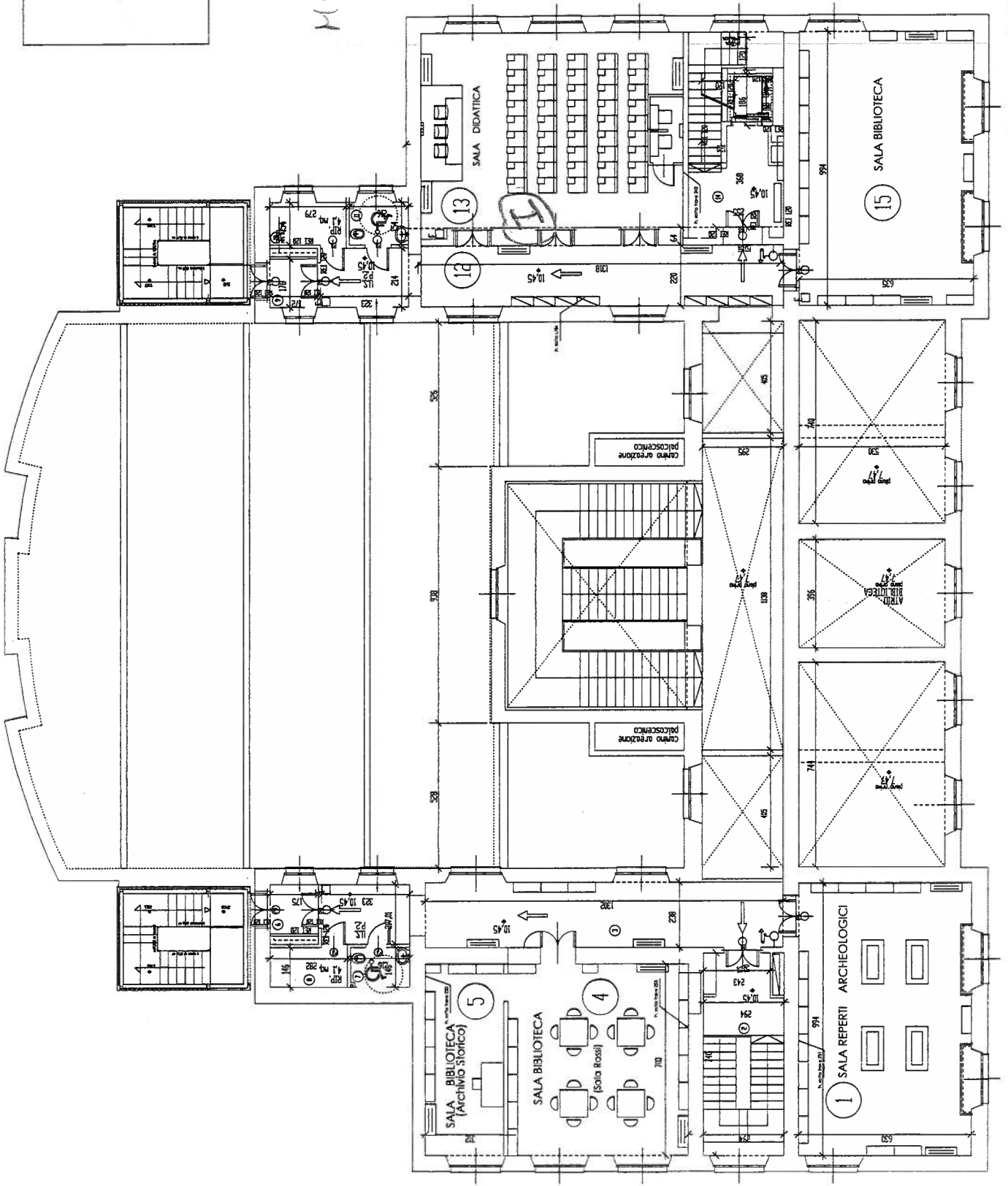
910
549 TOTOU



Piar

amr

MA. 383, 20

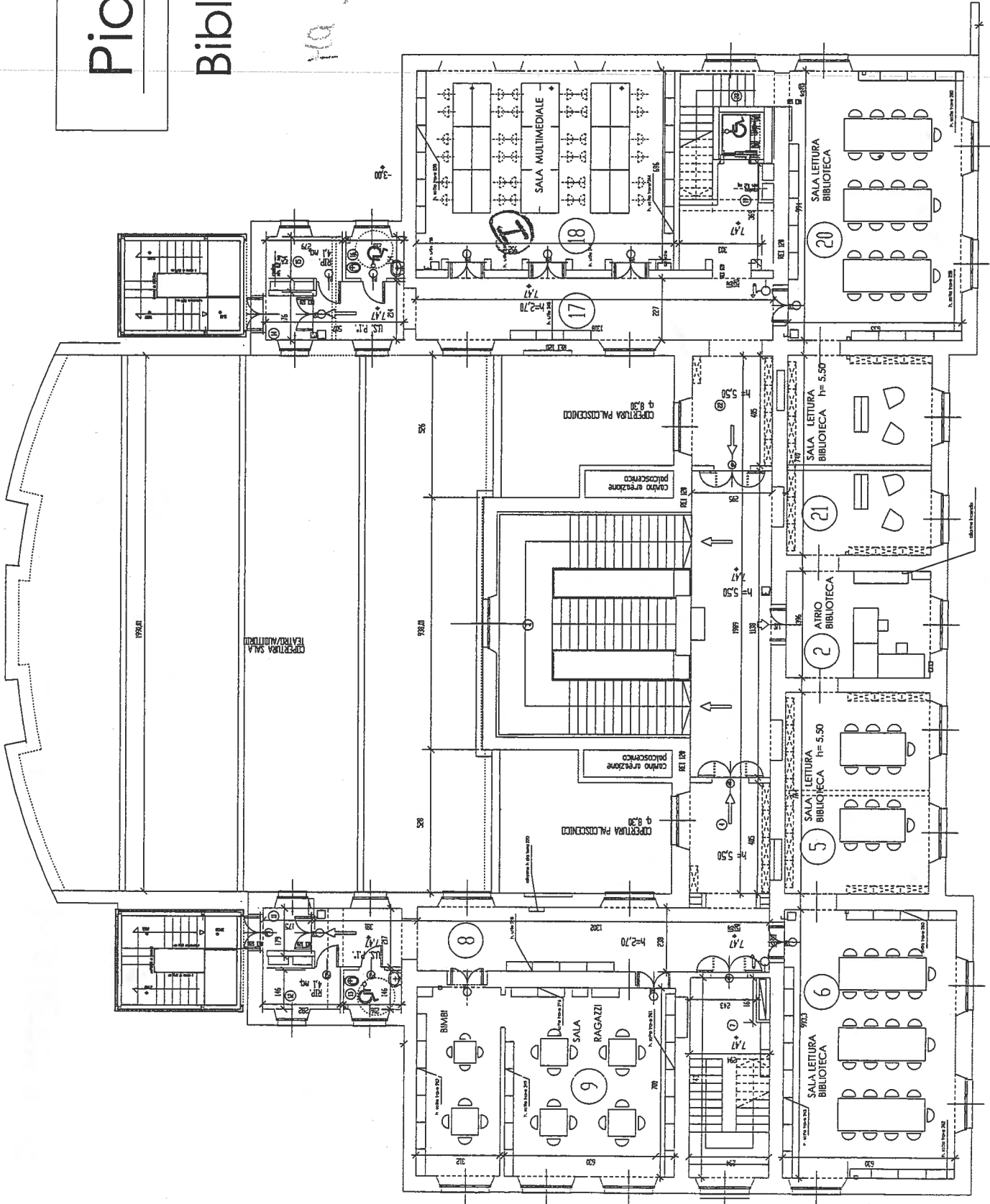


PIANO SECONDO AMM.

Piano I

BIBLIOTECA

10/5/20, 2/4



PIANO SECONDO